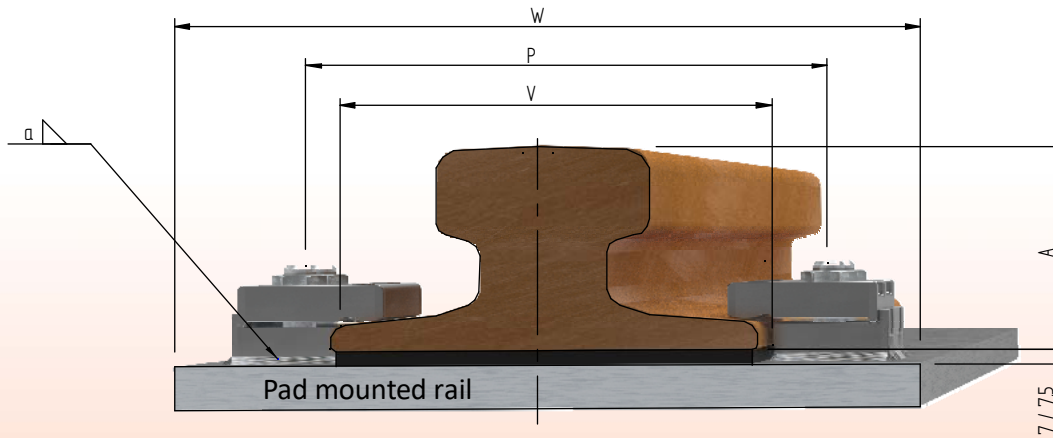
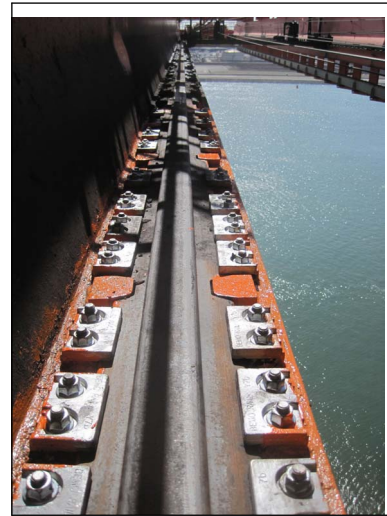


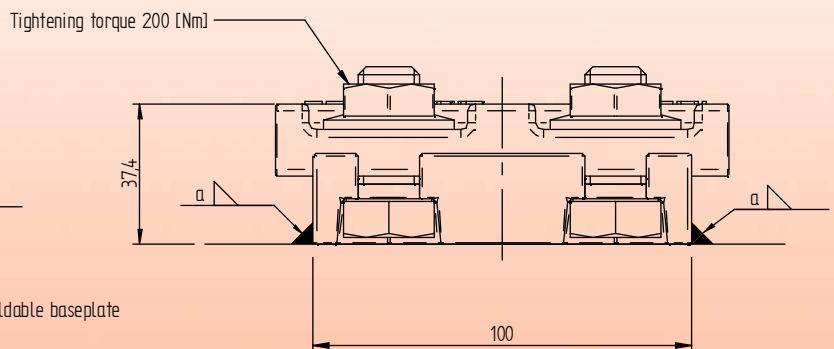
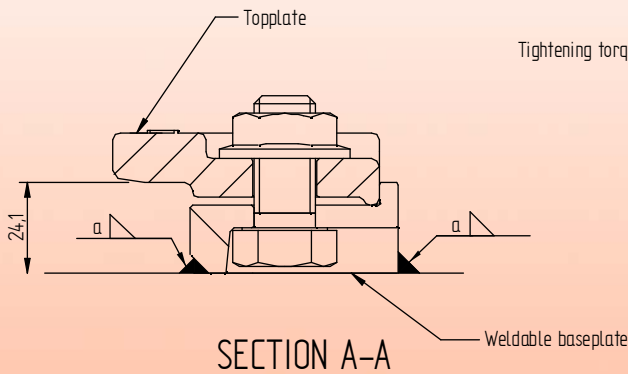
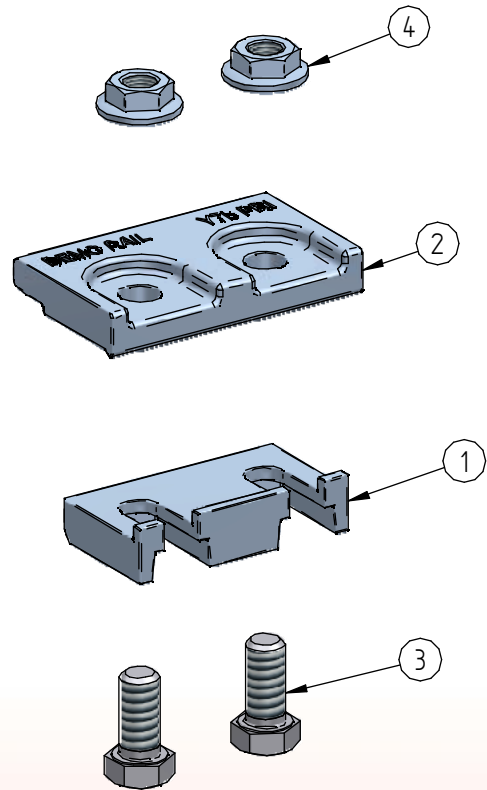
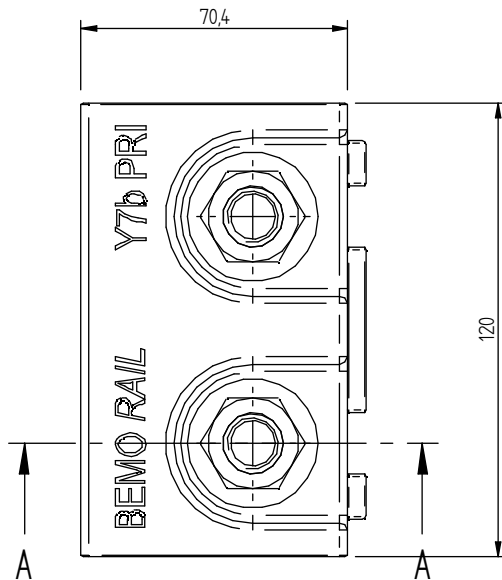
# Weldable rail clip Y7b PRI



	Inside distance between baseplates			V	Rail base +4	[mm]
	Distance between bolts M16			P	Rail base +54	[mm]
	Minimum width sole plate			W	Rail base +130	[mm]
	F [mm]	C [mm]	A [mm]	Pad mounted rail		
AS86	150	101,6	152,4	Y7b PRI		
MRS86	165	102	102	Y7b PRI		
MRS87A	152,4	101,6	152,5	Y7b PRI		
MRS140	220	120	150	Y7b PRI		
A150	220	150	150	Y7b PRI		
CR73	140	100	135	Y7b PRI		
ISCR120	170	120	170	Y7b PRI		
QU120	170	120	170	Y7b PRI		

Specification Bolts	Fillet weld	Max side load [kN]	
Hexagon headscrew: ISO4017 / DIN933	a4	130 [kN]	
Steel grade: 8.8 HDG			
Tightening torque: 200 [Nm]			

# Weldabl rail clip Y7b PRI



\* Standard preservation is hot dip galvanized  
Other preservation options in agreement

4	Low Hexagon flange nut	Grade 8 H.D.G.	M16 ISO-metric	-	m = 0,040 [kg]
3	Hexagon head screw	8.8 HDG.	M16x35	DIN 933	m = 0,133 [kg]
2	Coverplate rail clip Y7b PRI	S355 HDG.	Y7b PRI		m = 0,839 [kg]
1	Baseplate weldable railclip	S355J2 self coloured	B7b		m = 0,522 [kg]
Item	Discription	Material	Type / Dimensions	Norm	Comments



**BemoRail**

Debbemeerweg 59  
1749 DK Warmenhuizen  
The Netherlands

Tel.: +31 (0)226 425300  
Email: info@bemorail.nl  
www.bemorail.com