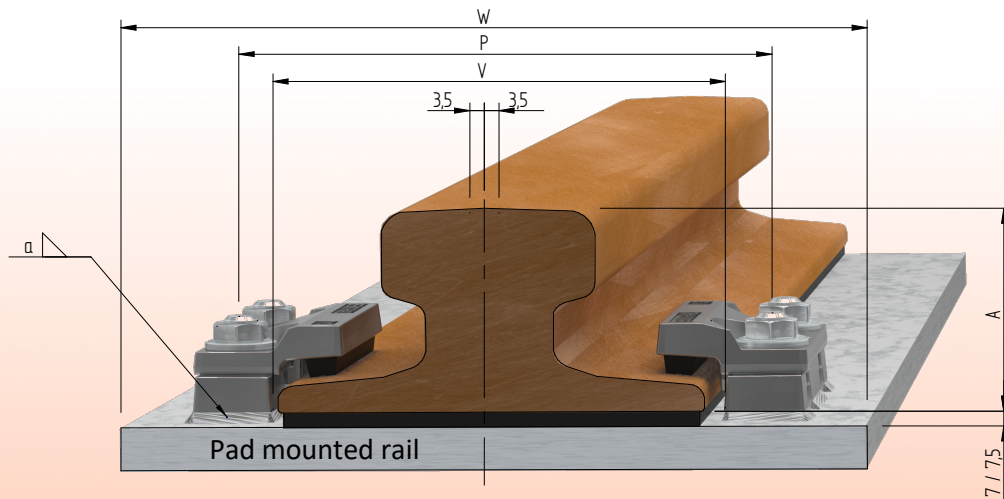


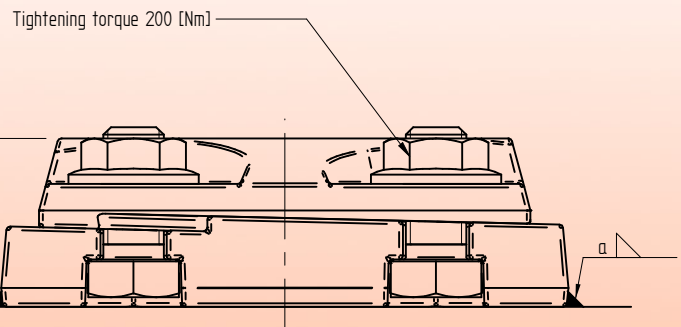
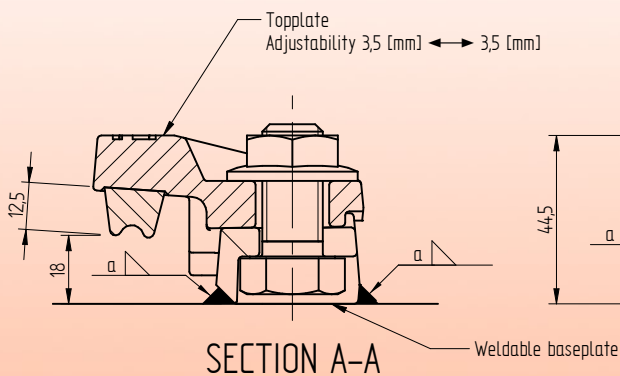
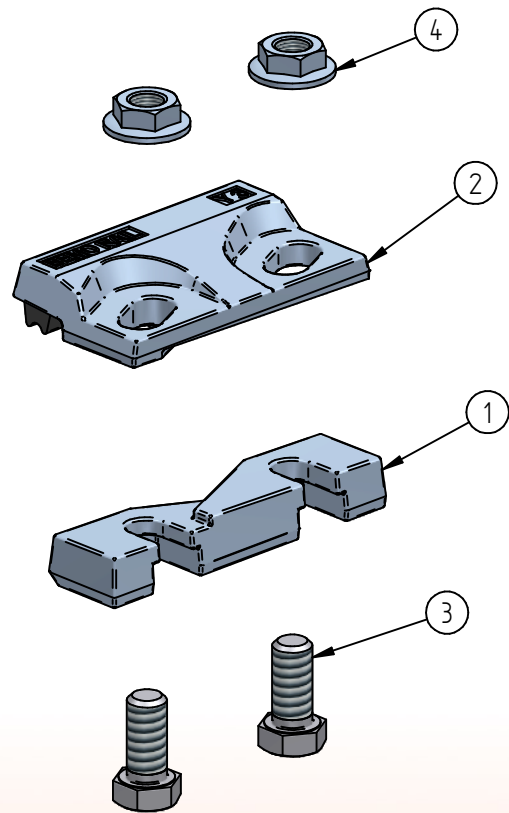
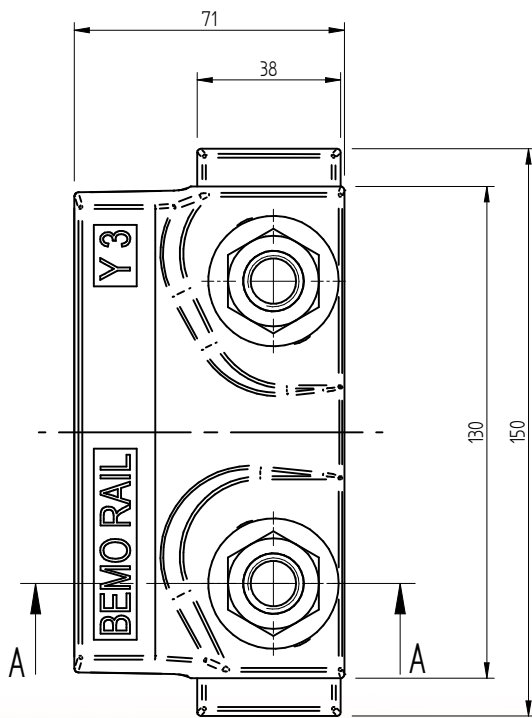
Weldable trolley rail clip Y3



	Inside distance between baseplates			V	Rail base + 14	[mm]
	Distance between bolts M16			P	Rail base + 54,5	[mm]
	Minimum width sole plate			W	Rail base + 100	[mm]
	F [mm]	C [mm]	A [mm]	Pad mounted rail		
A65	175	65	75	Y3		
A75	200	75	85	Y3		
A100	200	100	95	Y3		

Specification Bolts		Fillet weld	Max side load [kN]	
Hexagon headscrew:	ISO4017 / DIN933	a4	200 [kN]	
Steel grade:	8.8 HDG			
Tightening torque:	200 [Nm]			

Weldable trolley rail clip Y3



* Standard preservation is hot dip galvanized
Other preservation options in agreement

4	Hexagon flange nut	Grade 8 H.D.G.	M16 ISO-metric	-	m = 0,044 [kg]
3	Hexagon head screw	8.8 HDG.	M16x35	DIN 933	m = 0,133 [kg]
2	Weldable adjustable rail clamp cover with rubber nose	S355J2*	Y3-cover		m = 0,904 [kg]
1	Weldable adjustable rail clamp base	S355J2 self coloured	Y3-base		m = 0,631 [kg]
Item	Description	Material	Type / Dimensions	Norm	Comments



BemoRail

Debbemeerweg 59
1749 DK Warmenhuizen
The Netherlands

Tel.: +31 (0)226 425300
Email: info@bemorail.nl
www.bemorail.com