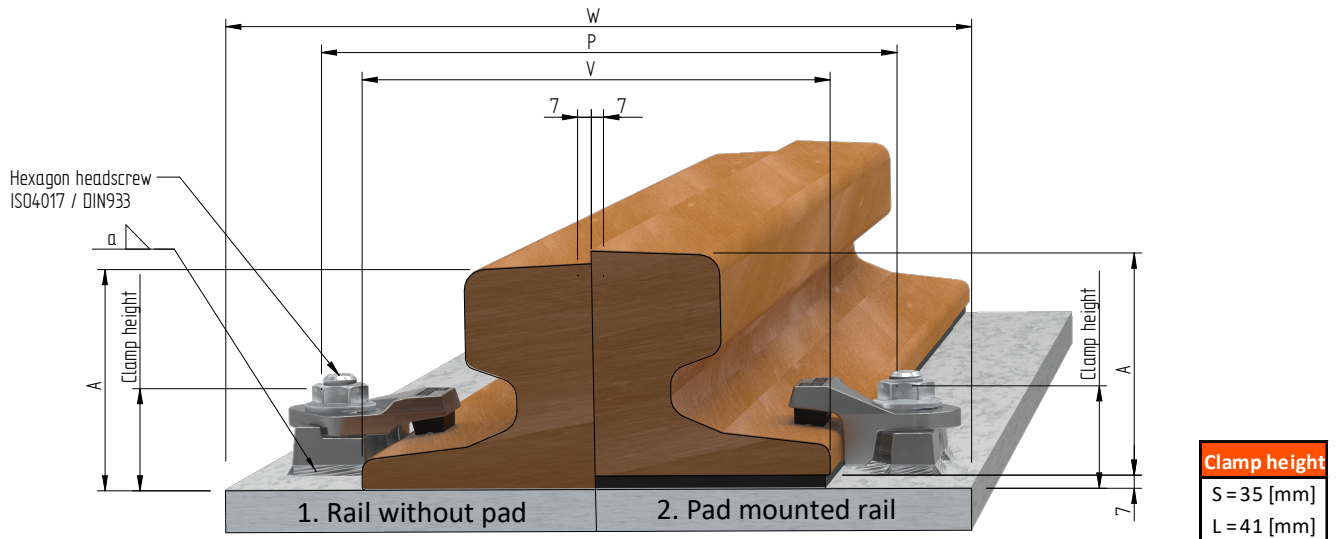


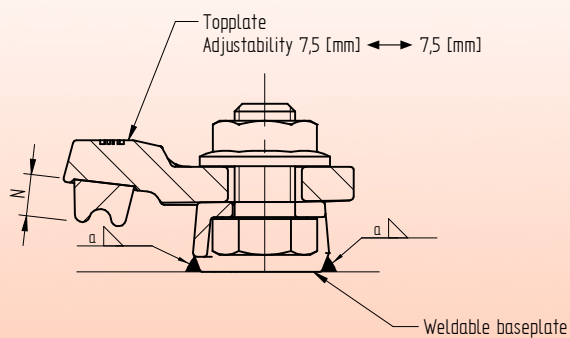
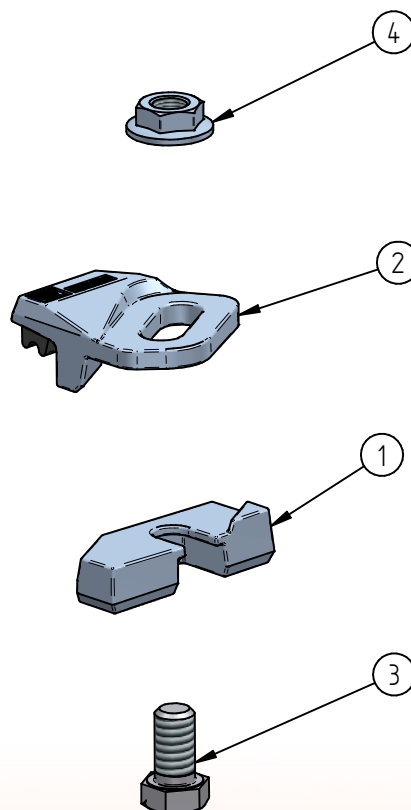
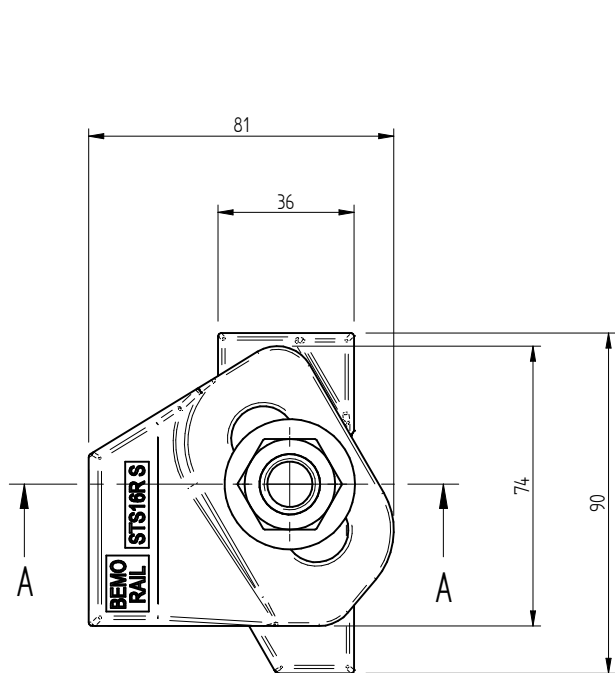
# Adjustable weldable rail clip STS16R



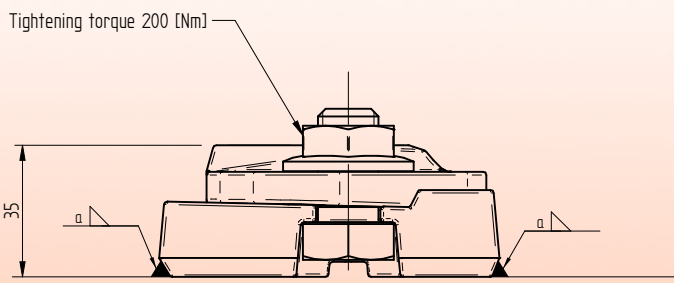
	Inside distance between baseplates			V	Rail base + 15	[mm]
	Distance between bolts M16			P	Rail base + 56	[mm]
	Minimum width sole plate			W	Rail base + 100	[mm]
	F [mm]	C [mm]	A [mm]	1. Rail without pad	2. Pad mounted rail	
A65	175	65	75	STS16R S	STS16R L	
A75	200	75	85	STS16R S	STS16R L	
A100	200	100	95	STS16R S	STS16R L	
A120	220	120	105	STS16R S	STS16R L	
MRS51	127	64	127	STS16R S	STS16R L	
MRS67	132	76	146	STS16R S	STS16R L	
CR73	140	100	135	STS16R S	STS16R L	
ISCR70	120	70	120	STS16R S	STS16R L	
ISCR80	130	80	130	STS16R S	STS16R L	
ISCR100	150	100	150	STS16R S	STS16R L	
ISCR120	170	120	170	STS16R S	STS16R L	
QU70	120	70	120	STS16R S	STS16R L	
QU80	130	80	130	STS16R S	STS16R L	
QU100	150	100	150	STS16R S	STS16R L	
QU120	170	120	170	STS16R S	STS16R L	
40E1 (S41-R14)	125	67	138	STS16R S	STS16R L	
41E1 (S41-R10)	125	67	138	STS16R S	STS16R L	
49E1 (S49)	125	67	149	STS16R S	STS16R L	
S54	125	67	154	STS16R S	STS16R L	
46E3 (NP46)	120	72	142	STS16R S	STS16R L	
50E2 (EB50T)	140	67	151	STS16R S	STS16R L	
EB63	140	72	151	STS16R S	STS16R L	
54E1 (UIC54)	140	70	159	STS16R S	STS16R L	
60E1 (UIC60)	150	72	172	STS16R S	STS16R L	

Specification Bolts		Fillet weld	Max side load [kN]	
Hexagon headscrew:	ISO4017 / DIN933	a4	110 [kN]	
Steel grade:	8.8 HDG	a5	140 [kN]	
Tightening torque:	200 [Nm]			

# Adjustable weldable rail clip STS16R S



SECTION A-A



\* Standard preservation is hot dip galvanized.  
Other preservation options in agreement

Name	N
STS16RC S N9	9,0 [mm]
STS16RC S N11	11,0 [mm]
STS16RC S N13	13,0 [mm]

4	Low Hexagon flange nut	Grade 8 H.D.G.	M16 ISO-metric	-	m = 0,044 [kg]
3	Hexagon head screw	8.8 H.D.G.	M16x30	DIN 933	Zinc Plated
2	Weldable adjustable rail clamp cover S with rubber nose	S355 J2*	STS16RC S		m = 0,349 [kg]
1	Weldable adjustable rail clamp base	S355 J2 self coloured	STS16RB		m = 0,331 [kg]
Item	Description	Material	Type / Dimensions	Norm	Comments

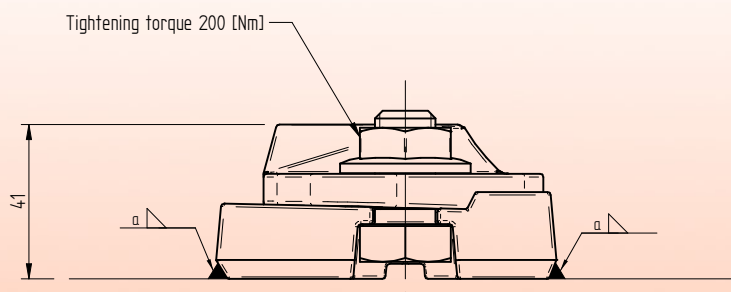
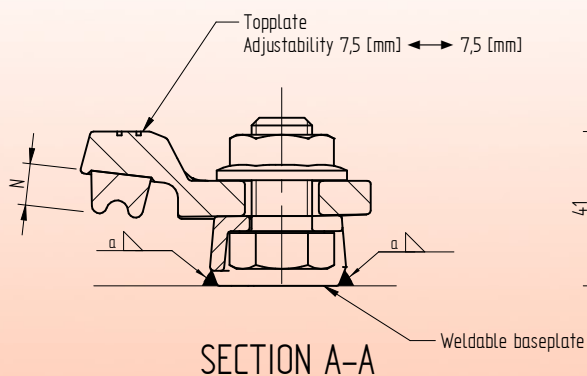
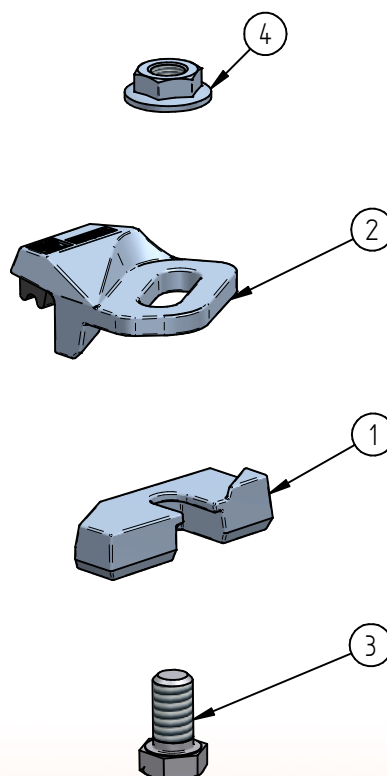
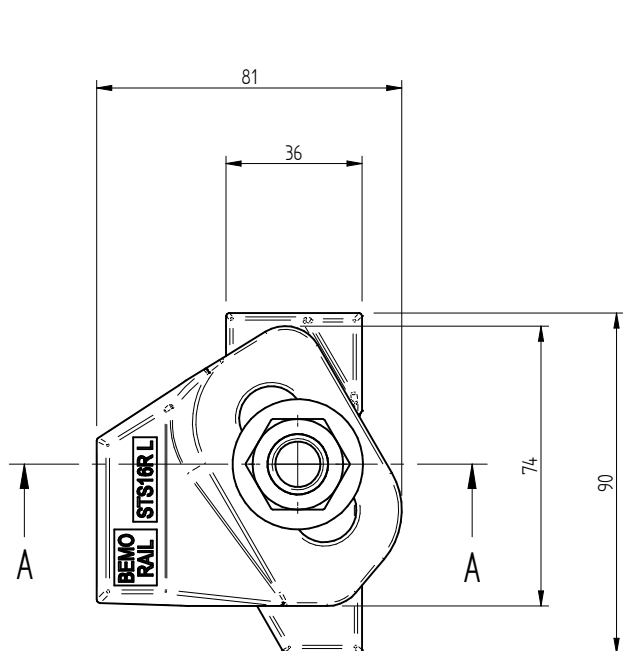


**BemoRail**

Debbemeerweg 59  
1749 DK Warmenhuizen  
The Netherlands

Tel.: +31 (0)226 425300  
Email: info@bemorail.nl  
www.bemorail.com

# Adjustable weldable rail clip STS16R L



\* Standard preservation is hot dip galvanized.  
Other preservation options in agreement

Name	N
STS16RC L N9	9,0 [mm]
STS16RC L N11	11,0 [mm]
STS16RC L N13	13,0 [mm]

4	Low Hexagon flange nut	Grade 8 H.D.G.	M16 ISO-metric	-	m = 0,044 [kg]
3	Hexagon head screw	8.8 H.D.G.	M16x30	DIN 933	Zinc Plated
2	Weldable adjustable rail clamp cover L with rubber nose	S355 J2*	STS16RC L		m = 0,347 [kg]
1	Weldable adjustable rail clamp base	S355 J2 self coloured	STS16RB		m = 0,331 [kg]
Item	Description	Material	Type / Dimensions	Norm	Comments



**BemoRail**

Debbemeerweg 59  
1749 DK Warmenhuizen  
The Netherlands

Tel.: +31 (0)226 425300  
Email: info@bemorail.nl  
www.bemorail.com