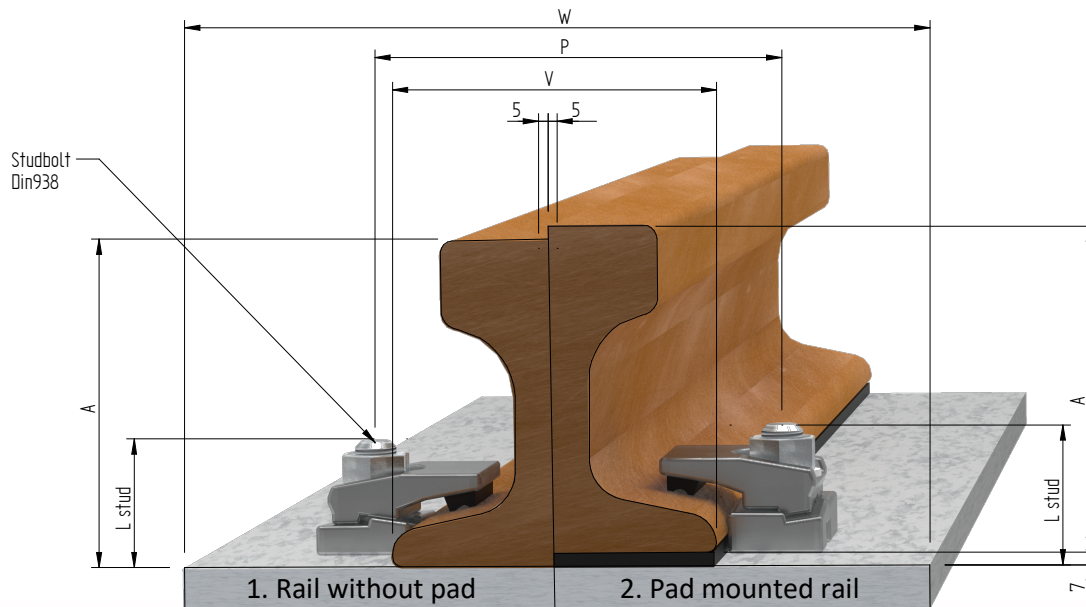


Standard rail clip 7ES

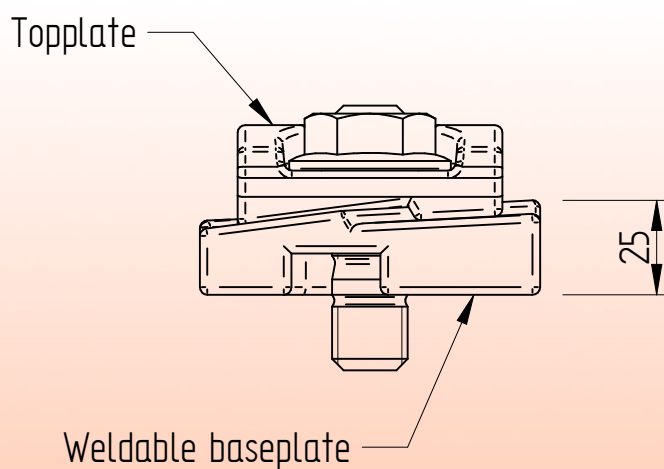
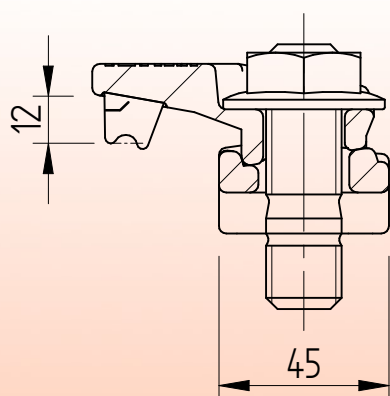
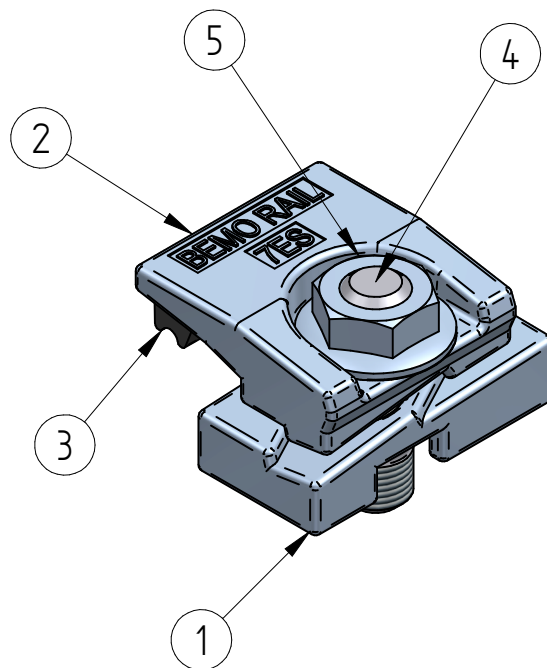
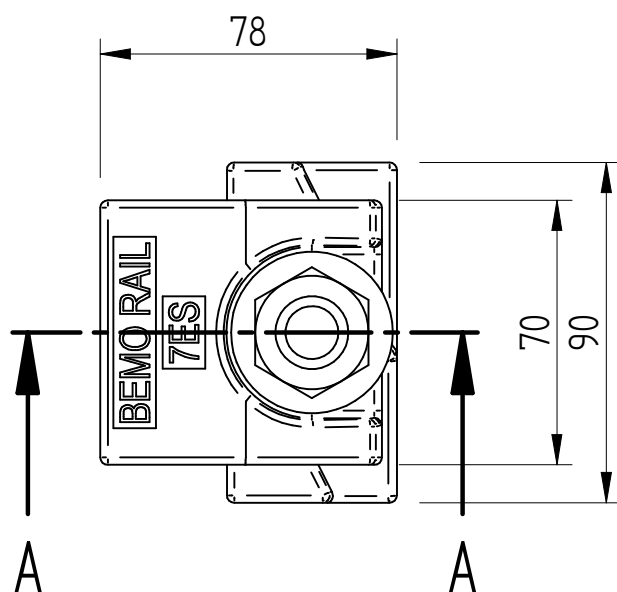


Stud length
B25=50 [mm]
B28=60 [mm]

	Inside distance between baseplates			V	Rail base +10	[mm]
	Distance between bolts M20			P	Rail base +45	[mm]
	Minimum width sole plate			W	Rail base +100	[mm]
	F [mm]	C [mm]	A [mm]	Rail without pad	Pad mounted rail 6 [mm]	Pad mounted rail 7 [mm]
A120	220	120	105	7ES B28 N12		
MRS51	127	64	127		7ES B25 N12	7ES B25 N12
CR73	140	100	135		7ES B25 N12	7ES B25 N12
MRS73	146	70	157		7ES B25 N12	7ES B28 N12
AS86	150	101,6	152,4		7ES B25 N12	
MRS87A	152,4	101,6	152,4		7ES B25 N12	
PRI85r	152,4	101,6	152,4		7ES B25 N12	
MRS86	165	102	102		7ES B25 N12	7ES B25 N12
MRS125	180	120	180		7ES B25 N12	7ES B25 N12
ISCR120	170	120	170		7ES B25 N12	7ES B28 N12
QU120	170	120	170		7ES B25 N12	7ES B28 N12

Specification	Stud bolt M20 DIN938 Grade 8.8 HDG	
Maximum side load	80 [kN]	
Tightening torque	300 [Nm]	

Standard rail clip 7ES-B25-N12



SECTION A-A

* Standard preservation is hot dip galvanized.
Other preservation options in agreement

Item	Description	Material	Type / Dimensions	Norm	Comments
5	Low hexagon flange nut	Grade 8 HDG.	M20 ISO-metric	-	m = 0,059 [kg]
4	Stud bolt	8.8 HDG.	M20x50	DIN 938	
3*	Rubber nose	Rubber EPDM75	N12		m = 0,010 [kg]
2*	Top plate railclip 7ES-10 - Steel part	S355J2 HDG.	7ES-		m = 0,488 [kg]
1*	Base plate railclip 7ES-10	S235JR H.D.G.	7ES-10-B H25		m = 0,437 [kg]

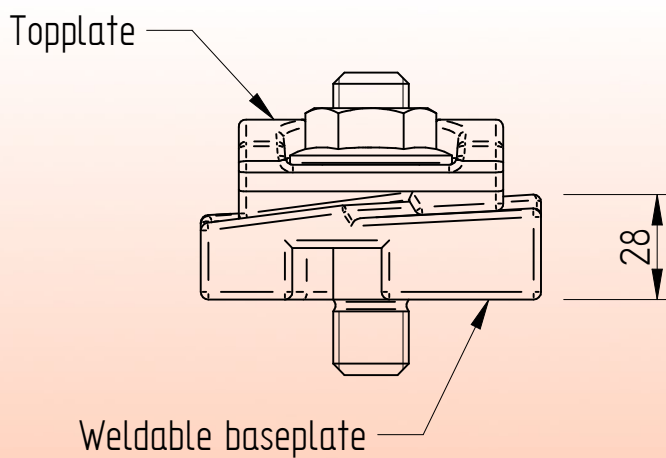
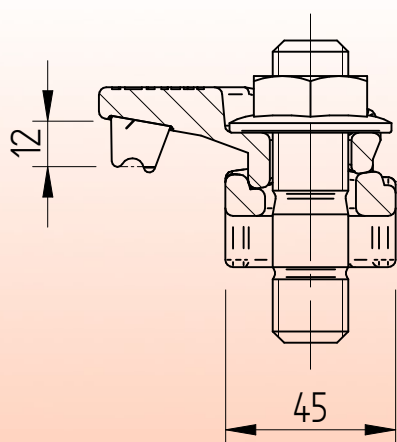
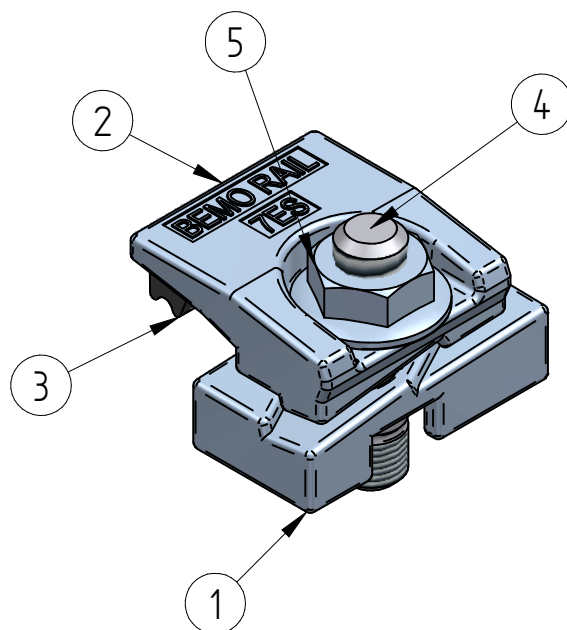
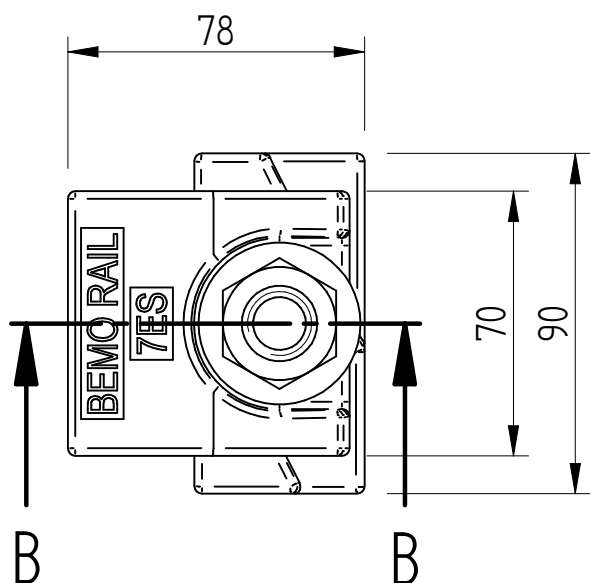


BemoRail

Debbemeerweg 59
1749 DK Warmenhuizen
The Netherlands

Tel.: +31 (0)226 425300
Email: info@bemorail.nl
www.bemorail.com

Standard rail clip 7ES-B28-N12



SECTION B-B

* Standard preservation is hot dip galvanized.
Other preservation options in agreement

Item	Description	Material	Type / Dimensions	Norm	Comments
5	Low hexagon flange nut	Grade 8 HDG.	M20 ISO-metric	-	m = 0,059 [kg]
4	Stud	8.8 HDG.	M20x60	DIN 938	
3	Rubber nose	Rubber EPDM75	N12		m = 0,010 [kg]
2	Top plate railclip 7ES-10 - Steel part	S355J2 HDG.	7ES-		m = 0,488 [kg]
1	Base plate railclip 7ES-10	S235JR H.D.G.	7ES-10-B-H28		m = 0,485[kg]



BemoRail

Debbemeerweg 59
1749 DK Warmenhuizen
The Netherlands

Tel.: +31 (0)226 425300
Email: info@bemorail.nl
www.bemorail.com