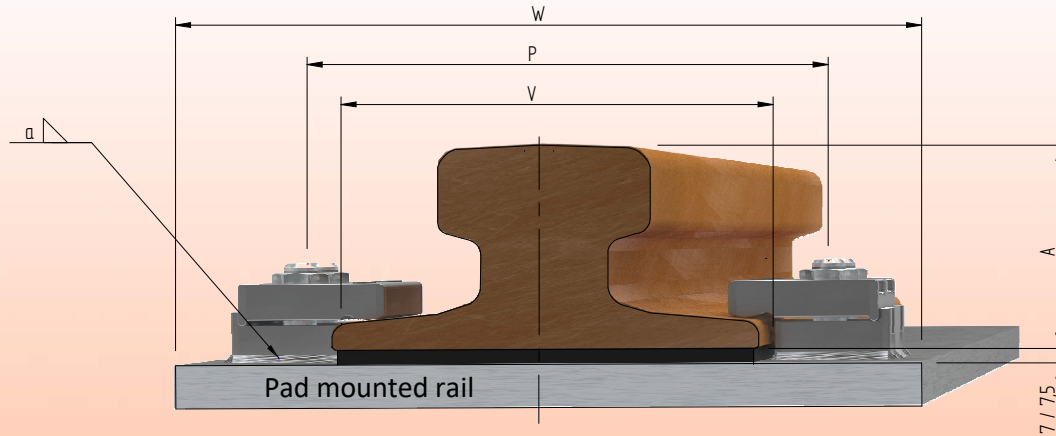


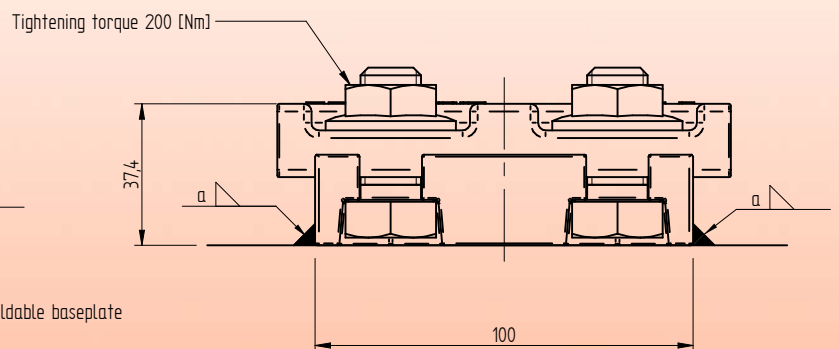
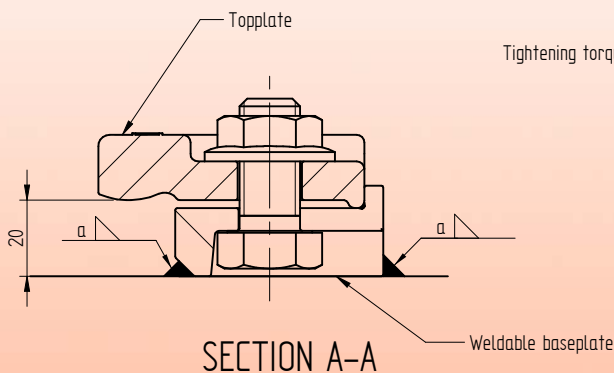
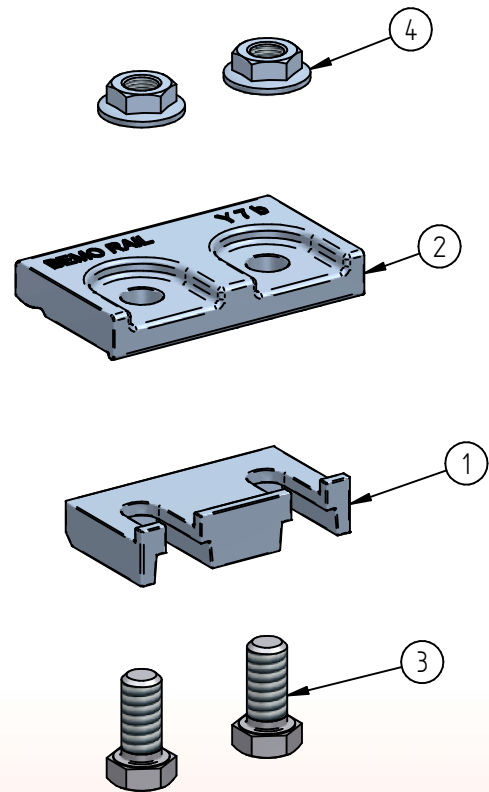
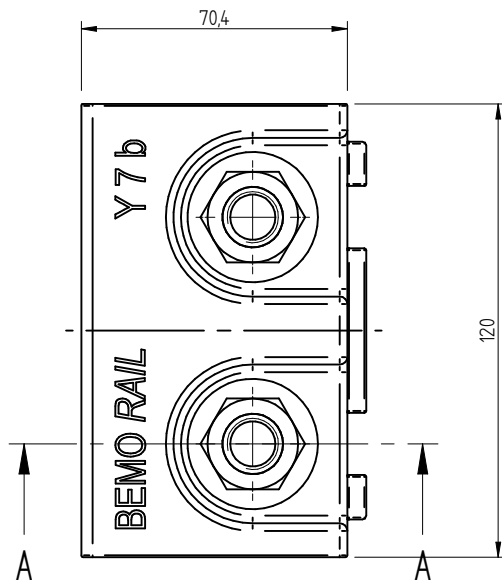
Weldable trolley rail clip Y7b



	Inside distance between baseplates			V	Rail base + 4	[mm]
	Distance between bolts M16			P	Rail base + 54	[mm]
	Minimum width sole plate			W	Rail base + 130	[mm]
	F [mm]	C [mm]	A [mm]	Pad mounted rail		
A65	175	65	75	Y7b		
A75	200	75	85	Y7b		
A100	200	100	95	Y7b		

Specification Bolts		Fillet weld	Max side load [kN]	
Hexagon headscrew:	ISO4017 / DIN933	a4	130 [kN]	
Steel grade:	8.8 HDG			
Tightening torque:	200 [Nm]			

Weldable trolley rail clip Y7b



* Standard preservation is hot dip galvanized
Other preservation options in agreement

4	Hexagon flange nut	Grade 8 H.D.G.	M16 ISO-metric	-	m = 0,044 [kg]
3	Hexagon head screw	8.8 HDG.	M16x35	DIN 933	m = 0,133 [kg]
2	Coverplate weldable railclip	S355J0*	Y7b		m = 0,906 [kg]
1	Baseplate weldable railclip	S355J2 self coloured	B7b		m = 0,522 [kg]
Item	Description	Material	Type / Dimensions	Norm	Comments